

eBMS

An integrated, web based enterprise business management system. Automating all processes and includes powerful workflow and KPI reporting.



Optimise IT Resources

Any Person can develop new or modify existing systems - no programming required

How eBMS Helps

Encourages Continuous Business Improvement, Corrective Action, Knowledge Management, Lean Process Development

Any Industry or business can use eBMS

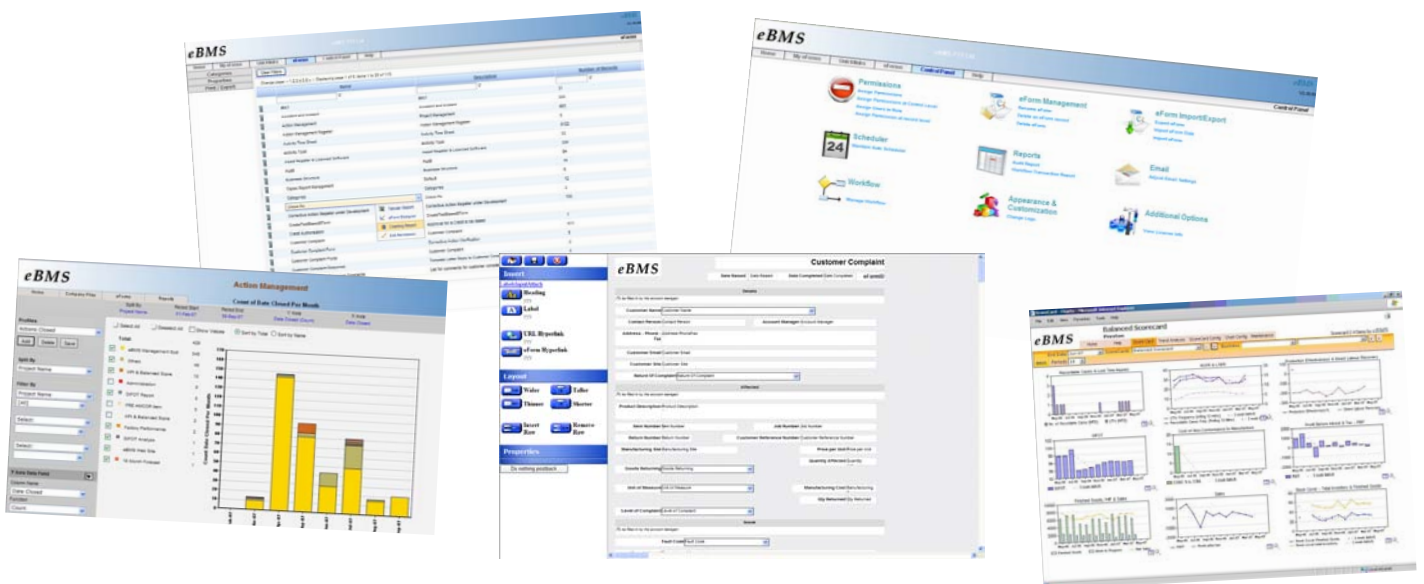
Quality and Operations, Human Resources & Environment, Finance, Supply Chain



We empower any person in the business to create multi-user web based IT processes!

Rapid Return on Investment

Any single IT system would normally be costed and assessed based on savings in time, materials or other resources. An eBMS implementation would provide immediate savings in wasted time and labour and a huge improvement in communication across the organisation. Payback would occur in months rather than years. The more the system is used the greater the savings opportunity.



Here is an example of a recent experience from one of our customers:

"Over the past few years Amcor Flexible Packaging Division has enjoyed a strong working relationship with eBMS who have always delivered creative, cost-effective solutions. For example our Flexible Packaging Division has been able to rationalize 8 customer complaints systems nationally down to one single web based system. This has not only reduced overhead costs but also improved response time, presents a consistent output to customers, and gives us the ability to consolidate reports without any additional overhead. This one system captured 12 separate processes across 8 businesses and touches more than 200 people. We now have 5 people who can design their own forms and workflow, and administer the system; all without IT support. - **Michael Crocker Kloet - Amcor Flexibles - Business Improvement Manager.**

eBMS, integrated continuous improvement

Many companies invest heavily in updated ERP solutions and modify their own processes to provide greater efficiencies. Most of the data captured is not connected to allow meaningful analysis of the business. eBMS can offer instant graphical views of how the business is performing and any user can generate profiles comparing various KPIs. This offers a powerful tool in determining the next improvement initiatives for the business.

eBMS empowering the business user to design and own the process

eBMS gives the business unconstrained ability to be the master craftsman and the architect of the business processes. There are no boundaries and the IT Group is not required. The "drop & drag" process designer can create new processes in a few hours, ready to capture data. Compare that to an IT designed database system that would take longer to develop and constantly require IT support.

Performance and Scalability

eBMS is designed to keep step with your company's business growth. A choice of solution is available from a hosted environment (starting from a few users only) to a Pro version, then up to a full Enterprise version (comparisons available below and on the eBMS web site). Issues are resolved faster and communications are improved dramatically. As eBMS is a multiple user, collaborative business system it can assist in knowledge retention and management. Action items and important tasks or activities can be directed immediately to appropriate individuals due to the simple workflow system.

eBMS Overview

A content/document and business process management system. A continuous improvement, corrective action enterprise reporting solution.

eBMS can be used as a centralised filing system, to logically organise and manage documents. The search capability provides users with immediate access to files regardless of their folder location. Automating and standardising paper based, manual systems can offer incredible savings and improve on administrative efficiencies.

Ease of Use

eBMS really does deliver clever business management solutions. Anyone can use it. After an initial training session little or no support would be required. Users simply input and save data into the relevant eForm creating a new record. The eForms can be printed and will look exactly as setup on screen.

It is important to note that any of these systems could be designed within hours, ready to capture data for business analysis. Individuals using eBMS have claimed that it is powerful and simple to use. Imagine the impact to the company having immediate and automatic access to critical business intelligence.

eBMS can directly import and export data to and from Enterprise Resource Planning (ERP) & Manufacturing Resource Planning (MRP) systems. The powerful reporting capability offers a more cost effective alternative to expensive Business Intelligence solutions. Plus, you don't need an expert to come in and run the software. The important people in your business make the decisions based on the needs of the business.

Consider the cost of one particular system that may improve a small facet of the business. Normally with IT systems, there are installation costs, internal training, systems integration, design costs, maintenance and upkeep fees. eBMS can assist in providing an integrated solution comprising of numerous systems that all talk with each other. Would you like to find out more? Visit our Web site or call for free appraisal of your potential requirements.

System Benefits

- Any employee can use eBMS to design new processes & collaborative work systems without IT dept. assistance
- Every record and every field can be used for powerful trend analysis reporting
- Workflow & scheduling encourages active communication & assists in resolving any work issues faster
- Powerful KPI (Key Performance Indicators) reporting identifies new improvement initiatives

eBMS Versions Comparison

eBMS Version	Permissions	Import / Export	Charting & Tables	Scheduler	Process Designer
eBMS Light (Limit on number of users)	OPT	OPT	•	OPT	•
eBMS Pro (Full basic system, can upgrade to enterprise)	•	•	•	OPT	•
eBMS Enterprise (Feature rich enterprise suite)	•	•	•	•	•
Hosted (Flexible lower entry cost)	OPT	OPT	•	OPT	OPT

Other features that are available in the enterprise & pro versions can be enabled on application. eg. Linked eForms, integration to outlook and linked eBMS systems.

For system requirements and additional information please visit the eBMS website. Proudly - Designed & Developed in Australia.